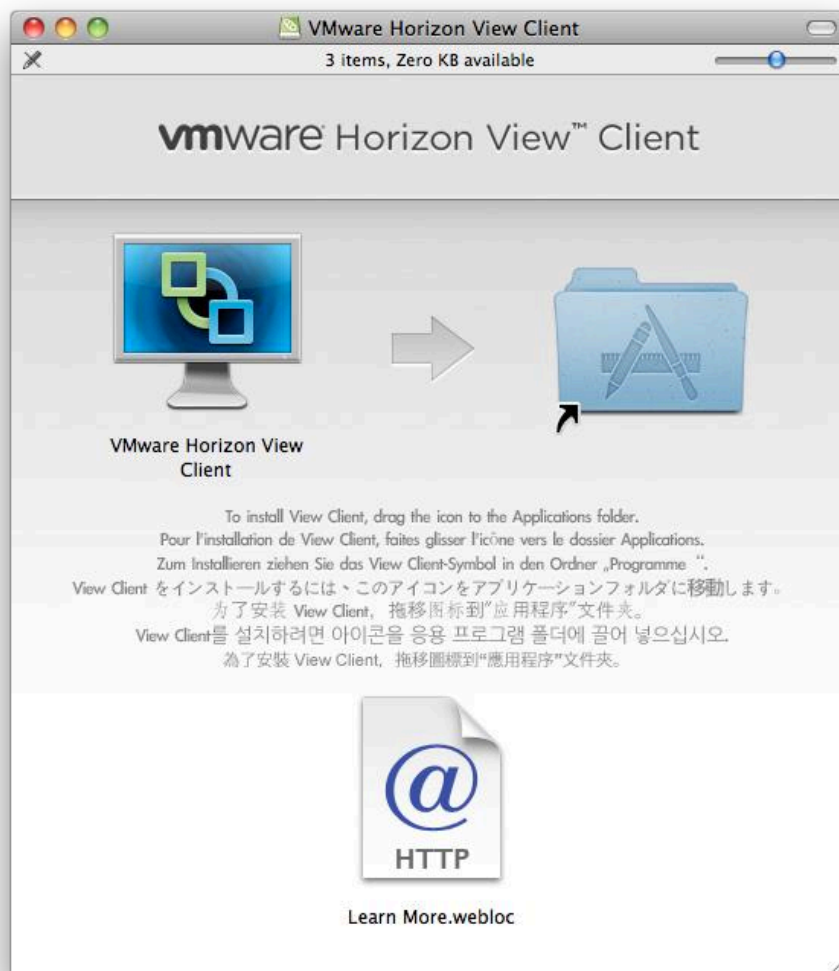


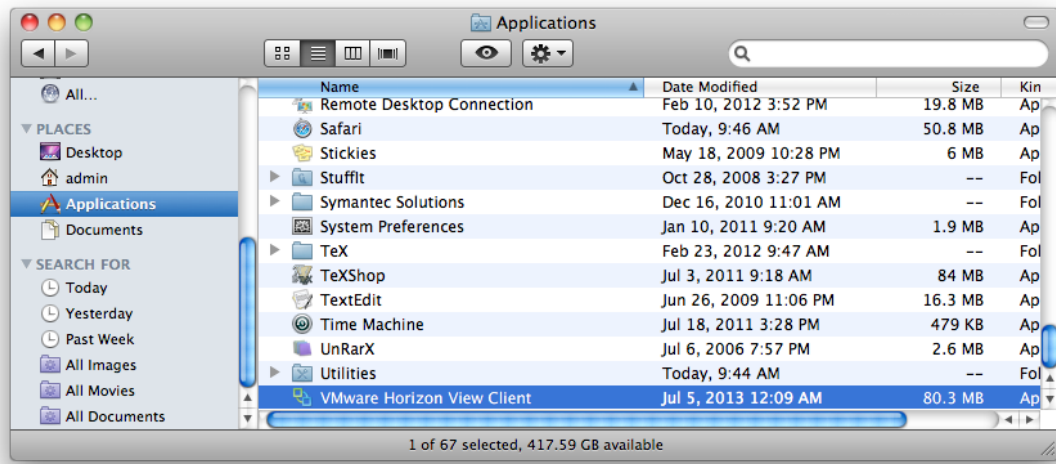
Installing View Client on a Mac

Note: Mac OS X 10.6.8 or newer is required to install View Client

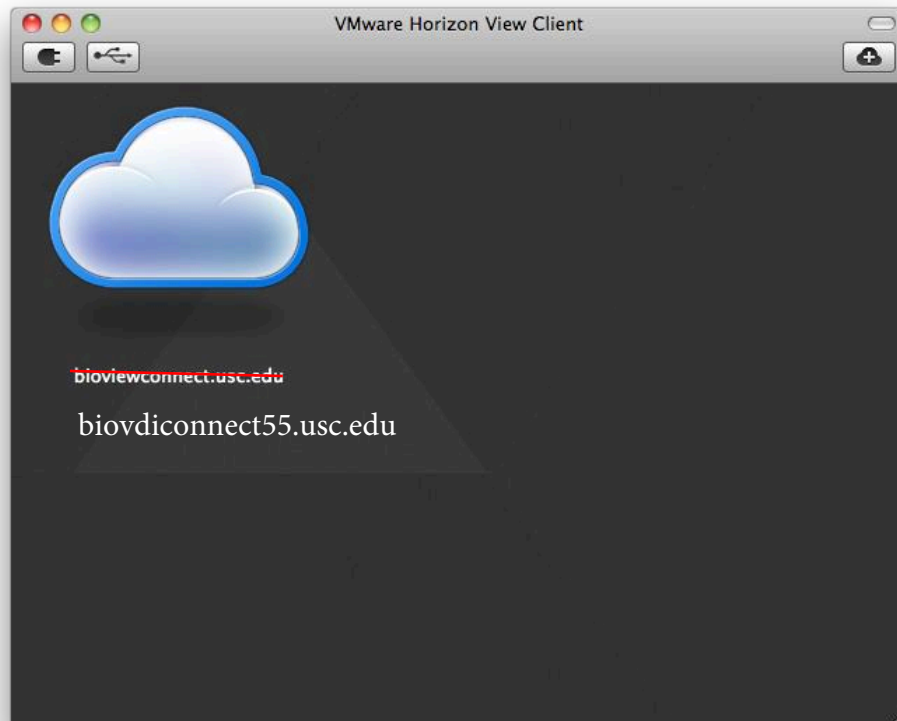
1. Download the client installation program.
2. The downloaded file may mount automatically. If not double-click on the downloaded file.
3. You need to drag the VMware Horizon View Client icon over to the Applications folder.



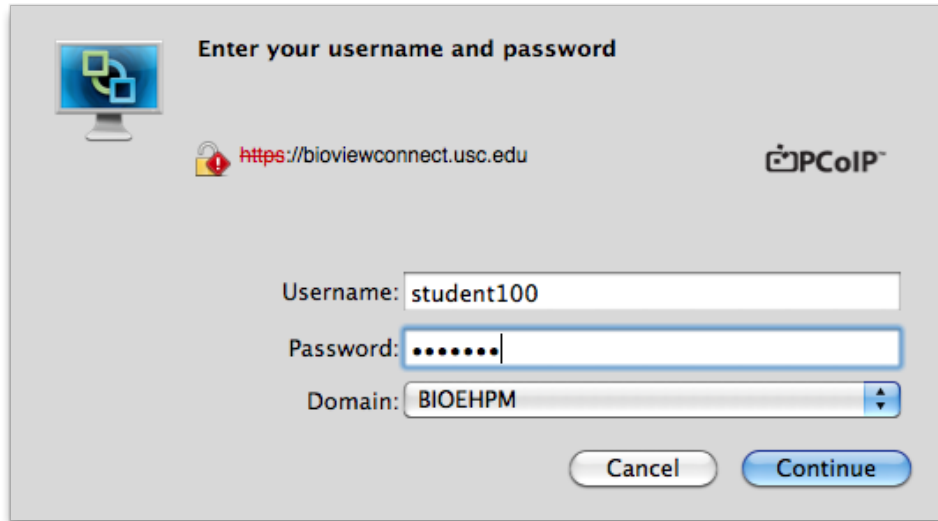
4. Go to your Applications, which can also be found under Finder. This is where you will find the VMware Horizon View Client.



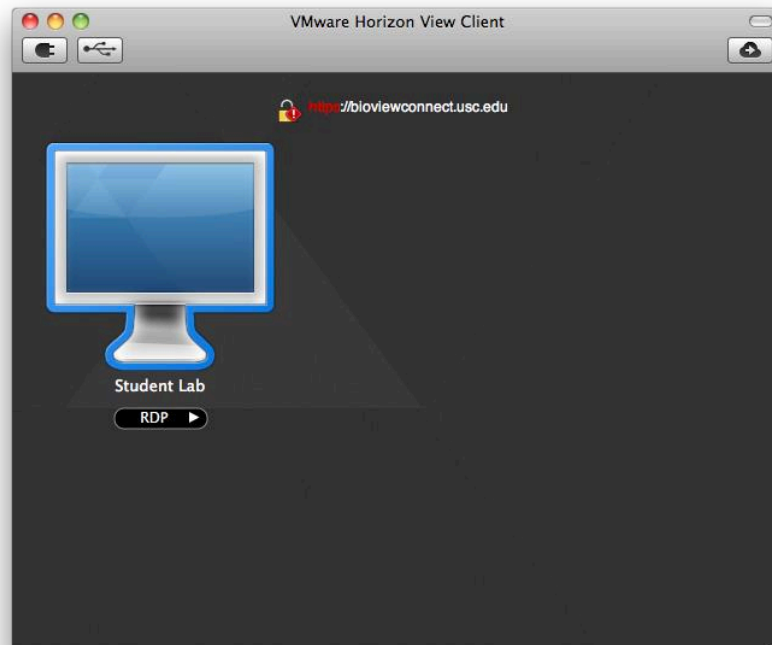
5. Enter **biovdconnect55.usc.edu** in the address box. You may get a warning about the program being downloaded from the Internet. Always trust the program.



6. Enter the username and password you were given in Blackboard and make sure the Domain selected is **BIOEHPM**.
(Sometimes blackboard will show your username and password with a /0 on the end, you can ignore the /0)



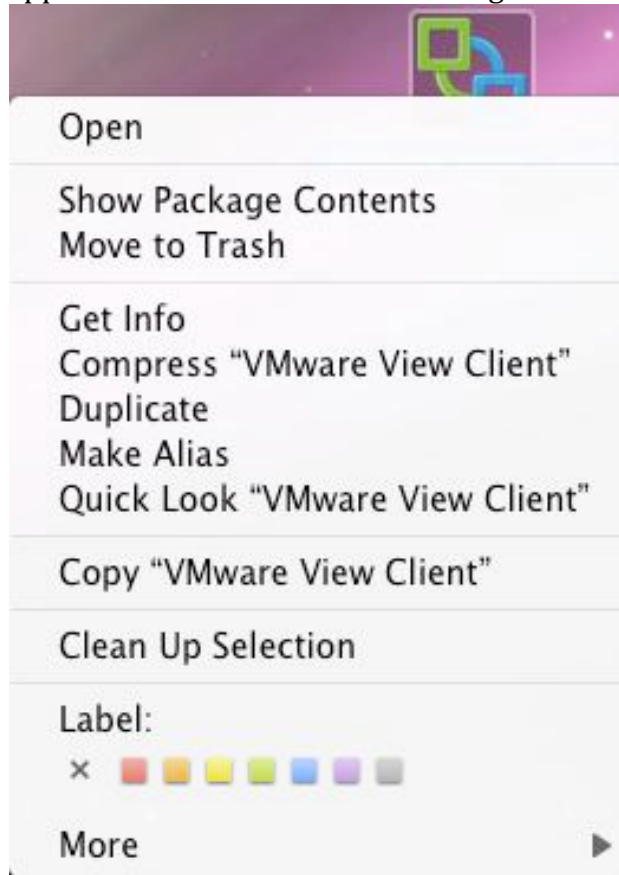
7. A window will appear showing the Student Lab. Make sure RDP is selected on the bottom and double click on the computer to connect. You may be asked to trust an IP address. Always trust the site.



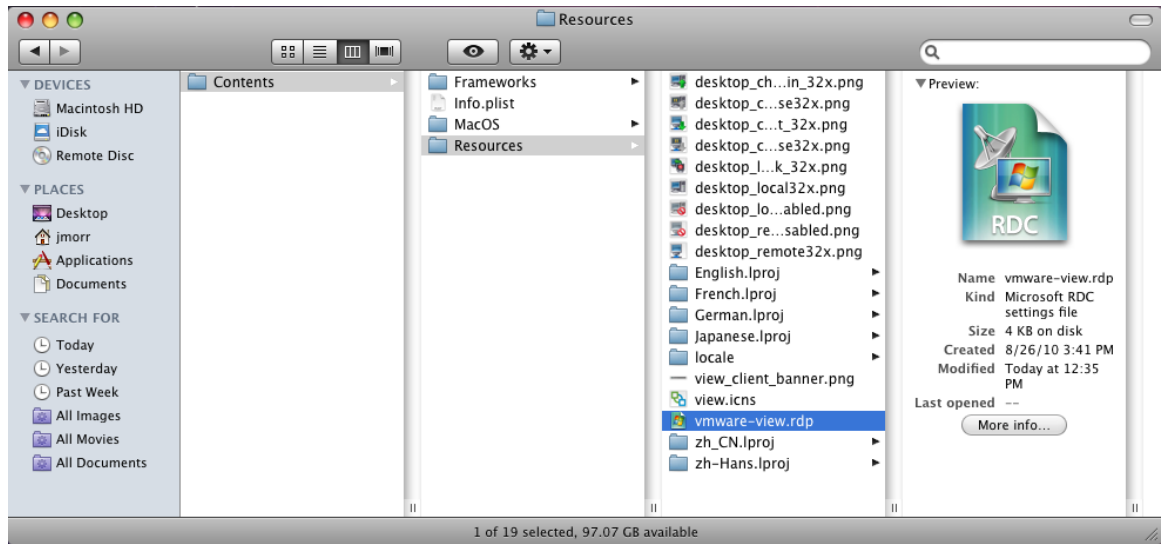
Connecting Mac Hard Drives to Virtual Desktops

Make sure you have installed Remote Desktop Connection for Mac first.

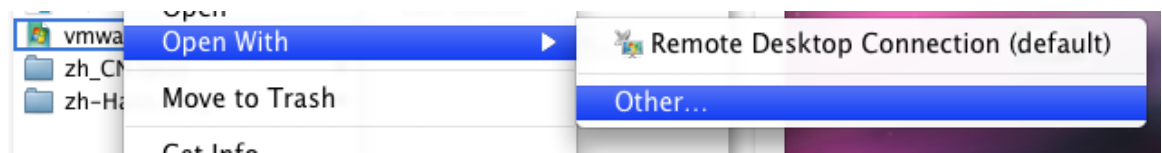
1. Command-click or Click with 2 fingers (index finger and middle finger on the touchpad at the same time) on the VMware Horizon View Client Icon in Applications and select Show Package Contents.



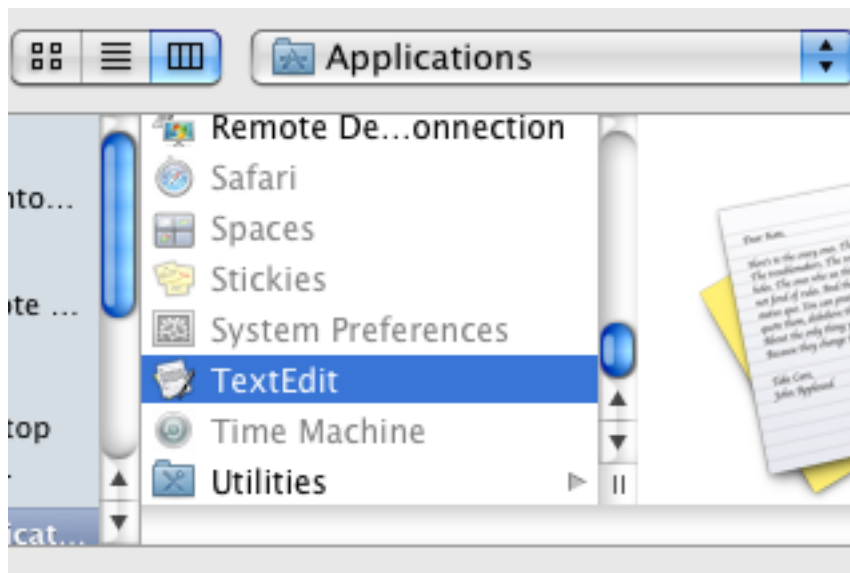
2. A Finder window should open. Select Client | Resources. You should see a file vmware-view.rdp.



3. Command-click or Click with 2 fingers (index finger and middle finger on the touchpad at the same time) on the file and select Open With | Other.



4. Select TextEdit from the list of available applications.



5. Look for the line that contains DriveRedirectionMode. The following line should have a 0 on it. Change the 0 to 1. Save the file and close the text editor.

```
<key>DriveRedirectionMode</key>  
<integer>1</integer>
```

The next time you connect to the remote desktop you should see your Mac hard drive list under My Computer in the Other section on the virtual desktop.

